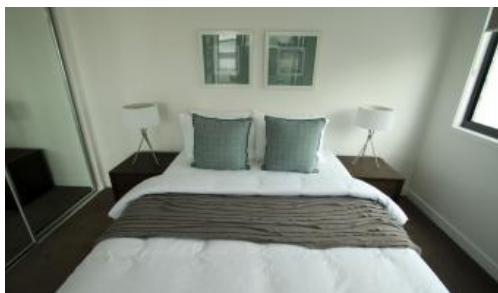


Sold

Helensvale



IDEALLY LOCATED - WALK TO WESTFIELD &...

FIRB APPROVED & FIRST HOMEBUYER \$15,000 GRANT

Featuring contemporary architectural design, Twenty2 Careel Close is Helensvale's newest residential development showcasing distinctively modern townhouses.

These cleverly crafted 3 bedroom homes come in two different designs complete with open plan living spaces and air conditioning.

Each townhouse comes complete with a single lock up garage and an additional single car space. Australian-made stainless steel appliances, a massive 315 litre solar hot water system and a 3000 litre rainwater tank.

Residents can look forward to unwinding at the sundrenched

🍷 3 🍽️ 2 🚗 2 🌊

Price SOLD
Property Type Residential
Property ID 22

Agent Details

Ron Schnakenberg - 0414 592 920

Office Details

Associated Realtors
9 Hamilton Ave Surfers
Paradise, QLD, 4217
Australia
0414 592 920

aR associated realtors

north-facing swimming pool or enjoy a barbeque at the poolside entertaining area. These low-maintenance homes enjoy low body corporate fees of only \$19.50 per week.

This beautifully landscaped development is nestled in a prime location moments from Helensvale Plaza, Westfield Shopping Mall, and the Helensvale Golf Course. Stroll to nearby parklands, walk the kids to school or nip over to enjoy the theme parks. The world is your oyster with the nearby Helensvale Train Station, bus routes and M1 Motorway!

Twenty2 Careel Close represents a remarkable opportunity for first home buyers and savvy investors who realise a quality home in an ideal location is a winning combination.

- Modern 3 Bedroom Townhouses all with 2 Car Accommodation, Quality Appliances & Solar Hot Water

- 2 Minutes to M1 Motorway, 10 Minutes to Griffith University & Gold Coast University Hospital

- A stone's throw from Helensvale Schools, Careel Reserve Parklands and the Helensvale Golf Course

- 5 Minutes to Fun Parks - Wet'n'Wild, Movie World & Dreamworld

- 10 Minutes to Harbour Town & and The Broadwater

- Easy commute to Brisbane in under an hour

- North Facing Sundrenched Pool with BBQ Facilities

The above information provided has been furnished to us by the vendor/s. We have not verified whether or not that information is accurate and do not have any belief in one way or the other in its accuracy. We do not accept any responsibility to any person for its accuracy and do no more than pass it on. All interested parties should make and rely upon their own inquiries in order to determine whether or not this information is in fact accurate.