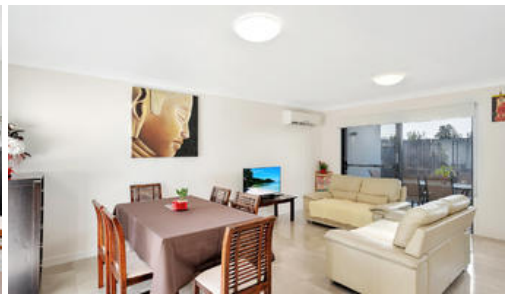




**Unit 7, 22 Careel Close, Helensvale**



**COMFORT, CONVENIENCE & STYLE**

Distinctly Modern Design - Ideal Location

OFFERS OVER \$419,000

This spacious 3 Bedroom Townhouse with 2 car accommodation is in as new condition featuring steel frame construction, rainwater tank, LED lighting throughout & Solar Hot Water.

This beautifully landscaped development is nestled in a prime location moments from Westfield Shopping Mall, Helensvale Plaza, and the Helensvale Golf Course. Stroll to nearby parklands, walk the kids to school or nip over to enjoy the theme parks. The world is your oyster with the nearby Helensvale train station light rail and easy

🛏 3 🚿 2 🚗 2

<b>Price</b>	Offers over \$419,000
<b>Property type</b>	Residential
<b>Property ID</b>	101
<b>Land Area</b>	0 m2

**Agent Details**

Rod Murray - 0402 384 711



The above information provided has been furnished to us by the vendor/s. We have not verified whether or not that information is accurate and do not have any belief in one way or the other in its accuracy. We do not accept any responsibility to any person for its accuracy and do no more than pass it on. All interested parties should make and rely upon their own inquiries in order to determine whether or not this information is in fact accurate.